

This map is only a sampling of the many iconic trees that grace the campus grounds. Three categories distinguish these trees:

Exceptional Trees are large specimens, have a unique form, or are an unusual variety. Some of these trees might also fall into one of the other categories.

Kubota Legacy Trees were planted by the Kubota family, most notably Fugitaro Kubota, from the 1950's through the 2000's. Fugitaro Kubota was responsible for several extraordinary landscapes on the campus created on the campus during the 1950's and 1960's.

Ciscoe Legacy Trees were planted by or associated with Ciscoe Morris, SU Grounds Manager during the 1980's through the 2000's. Ciscoe was a pioneer in organic landscape management and a well-loved figure on campus.

Building Legend:

ARRP Arrupe

LEML Lemieux Library & Learning Commons

STCN Student Center

LOYA Loyola Hall

ENGR Engineering

CASY Casey

BANN Bannon

GARR Garrand

PIGT Pigott

ADMN Administration

CHAP Chapel of St Ignatius

FINR Fine Arts

HUNT Hunthausen Hall

1103 1103 E. Madison



*The wonder is that we can see
these trees and not wonder more.*

Ralph Waldo Emerson

www.seattleu.edu/grounds/

www.seattleu.edu/cejs/

www.kubotagarden.org

www.ciscoe.com

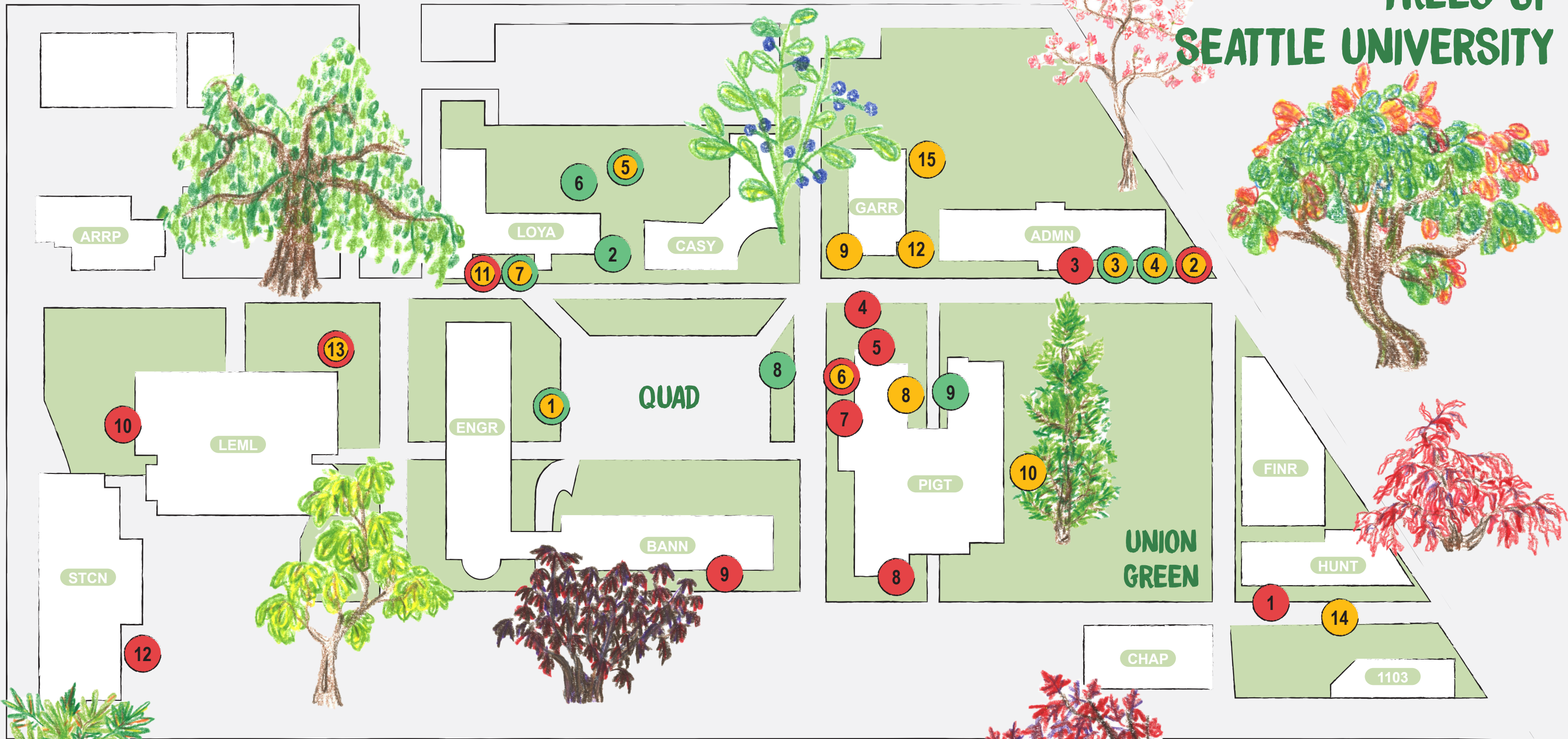
This brochure was produced through a collaboration between SU Grounds & Landscaping and SU Center for Environmental Justice & Sustainability in celebration of Arbor Day 2018. Hand drawn images of the trees and map design by Alyssa Lau, intern at Center for Environmental Justice & Sustainability. Yolanda Cieters, Shannon Britton, and Janice Murphy contributed to the creation of this map.

TREES OF SEATTLE UNIVERSITY



A self-guided map identifying
significant trees on the Seattle
University campus.

TREES OF SEATTLE UNIVERSITY



EXCEPTIONAL TREES

- | | | |
|----------------------------|------------------------------|--------------------|
| 1) Full Moon Maple | 7) Little Epaulette Tree | 13) Weeping Beech |
| 2) Mugo Pine | 8) Chinese Flame Tree | 14) Windmill Palms |
| 3) Sargent Magnolia | 9) English Laurel | 15) Ponderosa Pine |
| 4) Pink Star Magnolia | 10) Incense Cedar | |
| 5) Varigated Angelica Tree | 11) Bloodgood Japanese Maple | |
| 6) Golden Atlas Cedar | 12) Golden Catalpa | |

KUBOTA LEGACY TREES

- | | |
|--|---------------------------------|
| 1) Weeping Red Laceleaf Japanese Maple | 7) Giant Sequoia |
| 2) Mugo Pine | 8) Japanese Red Pine |
| 3) Redvien Enkianthus | 9) Red Oak |
| 4) Weeping Giant Sequoia | 10) Blue Atlas Cedar |
| 5) Copper Beech | 11) Bloodgood Japanese Maple |
| 6) Golden Atlas Cedar | 12) Varigated Western Red Cedar |
| | 13) Weeping Beech |

GISCOE LEGACY TREES

- | | |
|----------------------------|--------------------------------|
| 1) Full Moon Maple | 7) Little Epaulette Tree |
| 2) Tasmanian Pencil Pine | 8) Grosser's Stripe Bark Maple |
| 3) Sargent Magnolia | 9) Mount Omei Dogwood |
| 4) Pink Star Magnolia | |
| 5) Varigated Angelica Tree | |
| 6) Japanese Maple | |

