

**OUR
PEOPLE,
OUR
PLANET,
OUR
POWER.**



*Community Led Research in
South Seattle*

The Climate Justice Project

- 1** develop a **culturally relevant analysis** of climate change
- 2** understand **how residents of Southeast Seattle think and feel** about climate change, policies meant to stem climate change, and climate change preparedness.
- 3** develop **local community leadership** in the movement for Climate Justice.



The Power of the Process: Community-Based Research



- **inclusive** research process
- **builds power** for the community
- gathering **information and stories** used to drive public policy
- **centering the experiences of the most impacted** in policy and decision-making

Grassroots Steering Committee

In order to bring the science to the sidewalk and talk to our communities about climate change, **we needed experts from the community to help us figure out the right questions to ask.**

- Young people, cultural workers, activists and organizers in the labor movement, black leaders, and students from South Seattle.
- All people of color, ages 23-45.
- Dedicated an average of 15 hours a month.



Research Tools

- ❑ Community Survey
- ❑ Organizational Leader Interview
- ❑ Community Roundtables



PARTICIPANTS AT-A-GLANCE

Figure 1. Gender



Figure 2. Race/Ethnicity

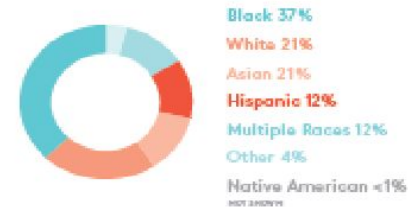


Figure 3. Age Range

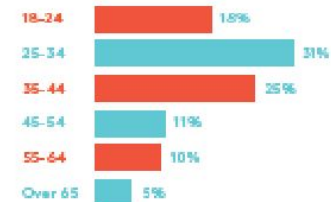


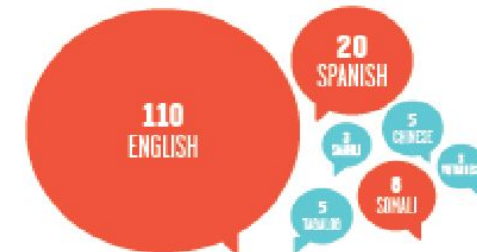
Figure 4. Housing Situation



Figure 5. Residence



Figure 6. Top Languages Spoken at Home



Grounding the climate conversation in the **everyday experiences of our communities.**

Table 1. Do these issues impact you in your neighborhood?

Exposure to Mold 55% impacted



Poor Indoor Air Quality 57% impacted



Exposure to Diesel Exhaust 60% impacted



Exposure to Toxic Chemicals 67% impacted



Living Near Polluting Industries 71% impacted



Pest, Insects, and Rodents 72% impacted



Lack of Affordable Food 72% impacted



Lack of Public Transportation 73% impacted



Living Near Major Highways 74% impacted



Lack of Affordable Housing 89% impacted



Impacted

Not Impacted or Don't Know

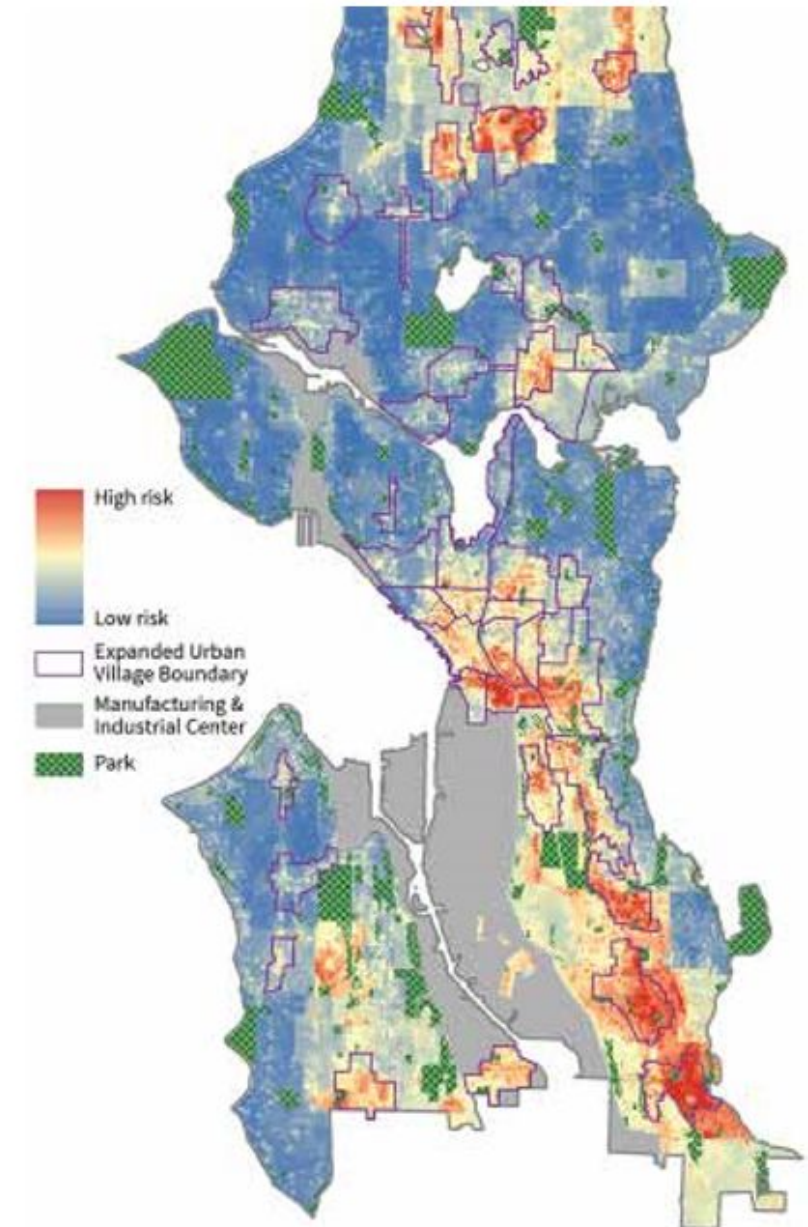


Affordable Housing Tops Community Concerns

- **Displacement risk on the rise**, especially for people of color and low-income people in South Seattle
- Displacement of low-income households **undercuts GHG emissions reductions**
- Displacement undermines any local efforts to build **climate resilience**
- Our communities are increasingly pushed into **climate 'hotspots'**
 - Flood-prone areas
 - Neighborhoods with low tree cover
 - Near major sources of pollution

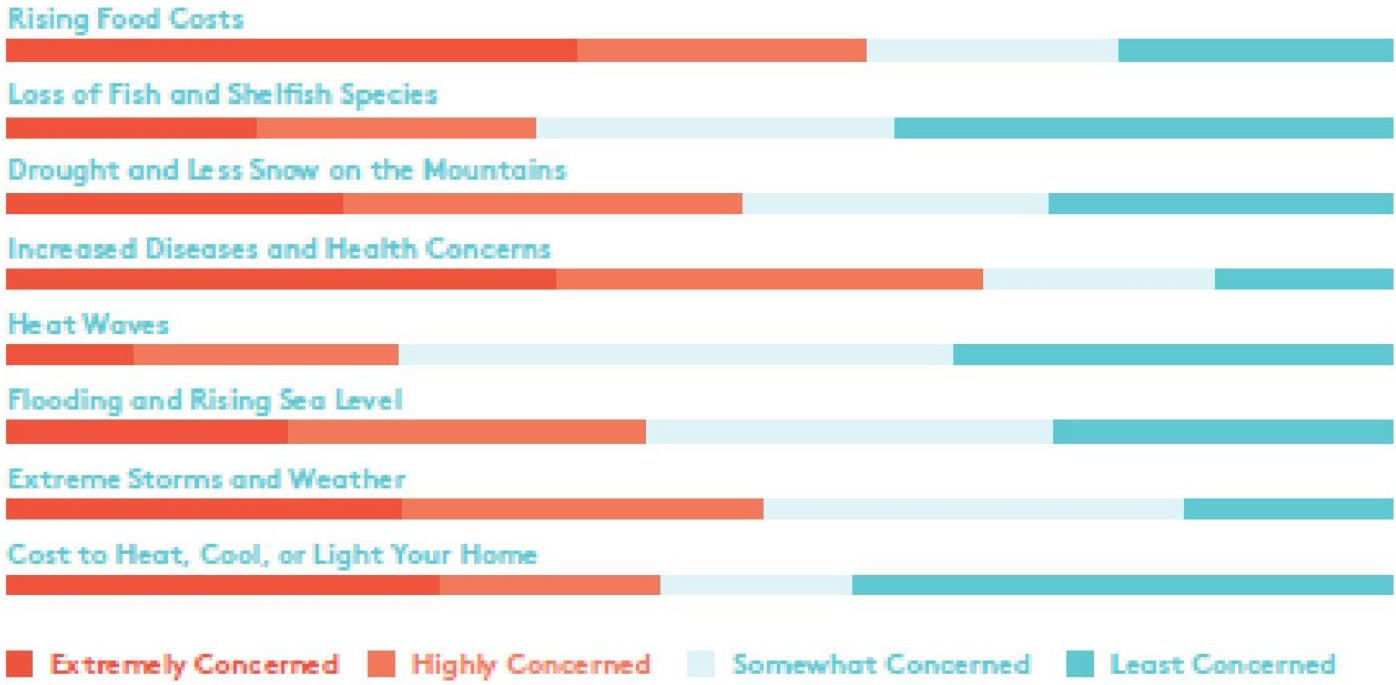
Map 1. Displacement Risk Index

Source: Seattle Comprehensive Plan

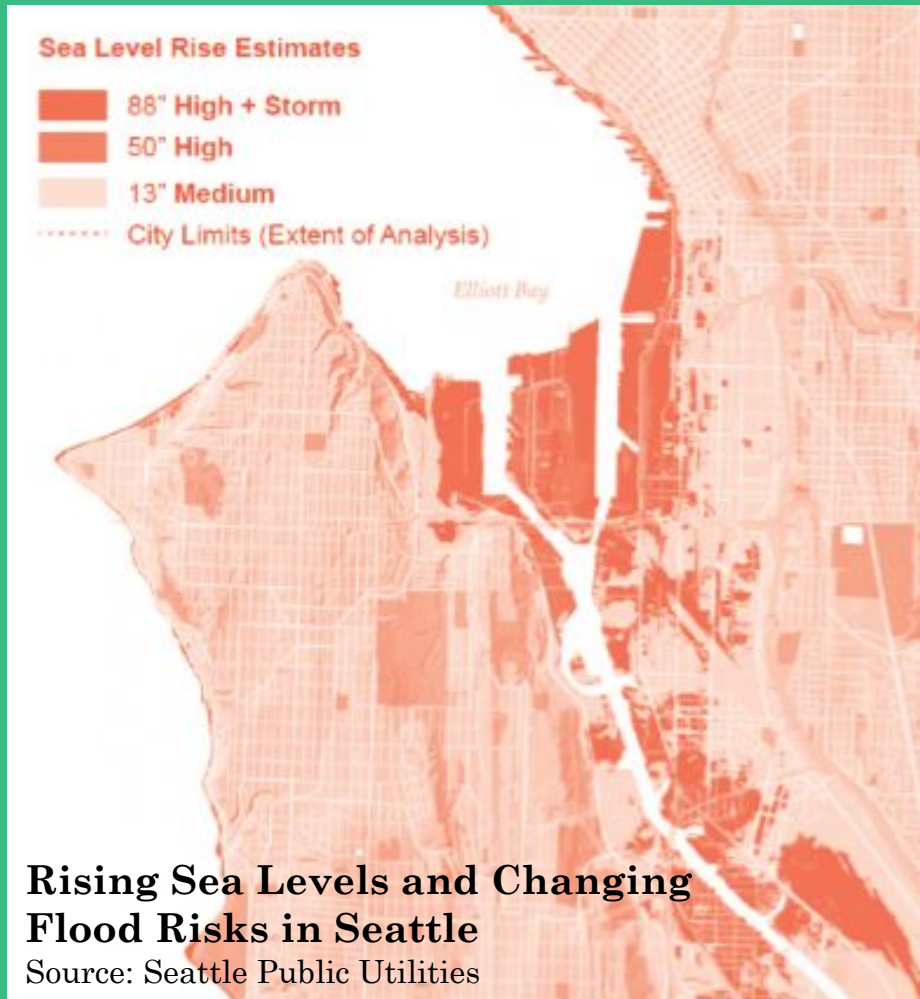


How do our communities perceive the impacts of climate change?

Table 2. Climate Impacts of Most Concern to Respondents



Climate change is a threat multiplier and worsens existing disparities.



- **Food access**
- **Health**
 - Urban heat island effect
- **Cost of Utilities**
- **Exposure to environmental hazards**
 - flooding in South Park and Georgetown

Our survey respondents were overwhelmingly supportive of carbon-reduction strategies.

The top solutions represented a mix of strategies:

1. Creating **sustainable communities** with reduced dependence on cars
2. Incentivizing clean or **efficient energy**
3. Increasing **equitable access to the green economy**

But only **24%** of respondents thought that they were more likely to be impacted by climate change.

That's not just a messaging problem. It's a movement problem.

Changing the climate movement as we know it



- Talk about climate change in terms of the issues our communities already face and
- Center the voices and experiences of those most impacted
- Meaningfully engage with the grassroots in climate planning and decision-making
- Build local leadership by people of color to identify and develop community expertise.



Recommendation 1: Prevent displacement of our communities away from the urban core

- 1: Community Control of Development**
- 2: Community Benefits Policy**
- 3: Study Climate Impacts of Displacement**

Recommendation 2: Engaging our Communities in Climate Resilience and Fighting Climate Change

- 1:** Education and organizing in ways that are meaningful
- 2:** Creating access to green careers for young people of color
- 3:** Organizing to keep fossil fuels in the ground





Recommendation 3:

Put Racial Equity at the Center of Climate Decision Making

- 1: Include Public Health in Climate Adaptation**
- 2: Create a City-Wide Climate and Environmental Justice Board**
- 3: Climate Adaptation Fund and Participatory Budgeting**
- 4: All Carbon Reduction Policies Must Center Racial Justice**

Recommendation 4: Build Local Economies for Resilient Communities

- 1: Locally-Centered Preparation and First Response as a Resilience Strategy
- 2: Locally Determined Economies
- 3: Targeted Local Hire
- 4: Prioritizing Equitable Energy Efficiency



Recommendations:

Mitigation

- Study climate impacts of Displacement
- Preserve and build affordable housing around transit
 - Community Controlled Development

Adaptation

- Establish a Climate Adaptation fund and administer the fund through Participatory Budgeting
- Integrate a public health focus in adaptation planning

Decision-Making

- Establish an Environmental Justice Board for the City of Seattle
- Center racial justice in climate policy and planning

